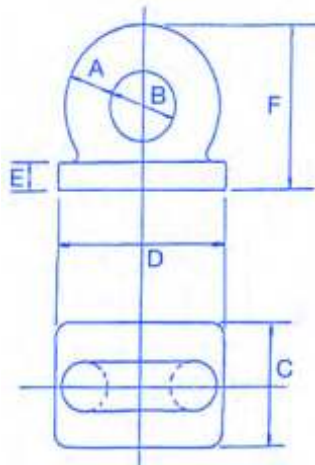


Rectangular Base Deckplates (Tested)



A mm	10	12.5	16	19	22	25	28	32	38	44	50
B mm	20	25	32	38	44	50	56	64	76	89	102
C mm	25	35	45	50	61	70	76	85	100	121	137
D mm	45	60	70	85	102	115	130	145	170	200	229
E mm	6	8	10	12	12	16	18	19	22	27	30
F mm	38	50	64	76	88	100	114	128	152	178	203
Proof Test Tonnes	2	3.5	5.5	7.5	9.6	12	15.75	20	29	38.25	50
Weight Kgs/eacg	0.14	0.31	0.45	0.79	1.36	1.82	2.95	3.86	6.58	18	25

Hot Dip Galvanised Anchors (alternative to Danforth Type)

Weight/Size kgs	1.5	2.5	3.5	5.0	7.5	10.0	14.0	16.0	18.0	20.0	25
Overall Length mm	425	520	549	583	687	713	877	965	988	1041	1051
Overall Width mm	300	365	390	450	430	520	620	630	640	670	774
Fork Length mm	220	240	260	300	330	390	520	550	555	560	576