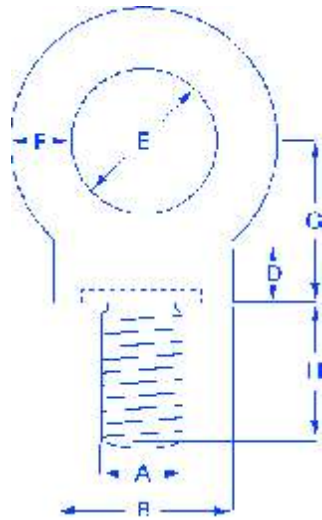


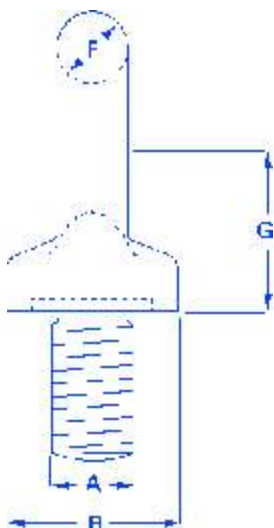
## Self-Colour Drop Forged Collared Eyebolts (Whitworth Thread) Proof Load Tested



Collared Eyebolts

A inches	3/8	1/2	5/8	3/4	7/8	1	1 1/8
Vertical SWL Tons	0.25	0.50	0.90	1.40	2.00	2.75	3.50
B mm	21	28	36	43	50	57	64
D mm	7	10	12	14	17	19	21
E mm	14	19	24	28	33	38	42
F mm	9	11	14	17	20	22	25
G mm	19	25	32	38	44	51	57
H mm	17	22	28	33	39	44	50
Weight Kgs/ each	0.06	0.12	0.25	0.45	0.63	1.05	1.56

## Self-Colour Drop Forged Collared Eyebolts (Metric Thread) Proof Load Tested



Collared Eyebolts

A mm	8	10	12	14	16	18	20	22	24	27	30	33	36
Vertical SWL Tons	0.15	0.25	0.40	0.50	0.80	1.00	1.60	1.60	2.50	2.50	4.00	4.00	6.30
B mm	22	22	22	29	29	36	40	45	52	58	65	72	81
D mm	7	7	7	10	10	12	14	14	17	20	22	24	27
E mm	15	15	15	20	20	24	27	30	35	39	44	48	54
F mm	9	9	9	12	12	14	16	17	21	23	26	29	32
G mm	20	20	20	26	26	32	36	40	46	52	58	64	72
H mm	18	18	18	23	23	28	32	35	40	46	51	56	63
Weight Kgs/ each	0.06	0.06	0.06	0.15	0.15	0.27	0.38	0.54	0.85	1.13	1.62	2.37	3.12